



Installation, Care & Maintenance Guide



Laminate
Flooring



Formica® Flooring Commercial Collection. In keeping with today's commercial interior design requirements, flooring must be visually appealing yet functional. Formica Flooring delivers a dynamic and inspiring range of contemporary solutions that still retain complete practicality. From the modern, adventurous retail space, to the formality of a corporate office, Formica Flooring has the range and style to enhance any commercial environment.

Formica Flooring is one of the most comprehensive and economical flooring ranges available. Developed for the New Zealand market, it incorporates the best European style with the latest in laminate flooring technology. Formica Flooring provides design professionals with greater choice than ever before with a range of 12 standard decors. The collection features registered embossed, light embossed and matt oiled surface finishes delivering a beautifully authentic appearance rarely achieved by any other laminate flooring.

Index

Page 2	Pre-Installation Checklist
Page 3	Sub-Floor Preparation
Page 4	Accessories Needed
Page 4	Tools Needed
Page 5	Flooring Calculator
Page 6	Flooring Installation
Page 10	Trim Guide
Page 13	Recommended Accessories
Page 13	Important Product Information
Page 14	After Care
Page 14	Care and Maintenance
Page 15	Technical Information
Page 16	Commercial and Residential Limited Warranty Information

Pre-Installation Checklist

- Formica Flooring is to be laid as a floating floor. It must not be glued or nailed to the sub floor.
- Ideally store the product in the building where the product is to be laid for 48 hours prior to commencing laying, to allow the product to acclimatise.
- Defective planks must not be laid. Carefully check each plank before installing. Planks that are damaged or do not fit together are to be returned to the retailer and replacement stock organised.
- Do not heat or air-condition the room prior to and during the installation period. Only open one pack at a time when installing the flooring.
- Leave an expansion gap around the perimeter of the laid floor.

Note: a gap of 1.4mm per lineal meter per side is recommended (minimum 8-10mm) e.g. a room 12 meters x 15 meters requires a gap of 17mm each side of the 12 meter length and 20mm each side of the 15 meter length. (Nominal measurements)

- Floor area 30m² – 100m²: requires a 10mm – 14mm gap
- Floor area 100m² – 200m²: requires a 14mm – 22mm gap
- Floor area 200m² – 300m²: requires a 22mm – 25mm gap
- Floor area 300m² or greater: install an expansion profile to divide the floor into even parts

Note: It is important to leave the recommended expansion gap for the flooring area around pipes, columns and door jambs. Otherwise these areas will obstruct the flooring from expanding and contracting as temperatures in the room change. Fill the gap with Unika Colour Sealant*.

- Formica Flooring must be laid separately between adjoining rooms. Allow a 20mm gap between the doorframes of the adjoining rooms and cover the gap with an expansion profile[^].

Note: It is recommended that Unika Lock Seal* is used between planks for flooring laid in areas subject to frequent accidental water spillage, i.e. kitchens, cafes, restaurants, bars, hairdressing salons and entrance/exit doorways (please refer to the instructions listed on the bottle for correct application).

- Ensure an allowance of 5% of additional flooring is added to the total amount of flooring required for the job, to cover wastage during the installation process. Refer Formica Flooring Room Calculator within this booklet.
- Formica Flooring planks should be laid parallel to the incoming light source. In hallways and narrow rooms install the planks parallel to the longer walls, to maximise the appearance of the floor's pattern.
- Check that you have all the correct accessories and tools to complete the installation. Refer the Accessories Needed and Tools Needed sections of this booklet.
- For further information on laying Formica Flooring, please refer to the Formica Flooring installation DVD.

Important point – Commercial Floor Areas

- Heavy furniture such as reception counters, as a general rule should not exceed 500kg. It is recommended that heavy objects supported on legs or castors that inhibit weight distribution, be avoided.
- Do NOT attach or fix units or fixtures to Formica Flooring. Fix these items to the sub floor and allow sufficient expansion gaps around the fixing points.

[^]Refer Formica Flooring Expansion Joint & Trim guide, page 10

*For more detailed information regarding accessories listed, refer page 4

- A commercial grade skirting product may be used to conceal the flooring's perimeter expansion gap. Skirting must be fixed to the wall and not the Formica Flooring.

Sub Floor Preparation

- All sub floors (concrete, solid timber floor boards, plywood, particleboard, vinyl, cork & ceramic tile) must be level, clean and dry.
- Carpets are not suitable sub floors.
- Existing sub floors must be checked to ensure they are securely fixed and level. If any parts of the existing sub floor are loose they must be refixed prior to installing Formica Flooring.
- Depressions in the sub floor must not exceed 3mm under a 1m straight edge. Depressions greater than 3mm must be filled in with a floor-leveling compound. Similarly raised areas exceeding 3mm over a 1m straight edge must be levelled by sanding or grinding.
- A Combination Foil/Foam Underlay must be laid over all existing subfloors when using 8mm product.

Note: 12mm Formica Flooring has an acoustic underlay already attached, therefore no additional underlay is required. However a moisture barrier of 200um polyethylene film must be laid over the sub floor and taped down prior to laying this product.

Accessories Needed

- A Combination Foil/Foam Underlay (laid foil-side up) for moisture protection, sound deadening and insulation when using 8mm product.
- Moisture Barrier (200um polyethylene film), laid over sub floor for moisture protection, for use with 12mm Formica Flooring.
- Silver foil (moisture resistant) tape, used to join end seams of Combination Foil/Foam Underlay.
- Installation spacers (wedges used for creating expansion gaps). Remove after installation.
- Expansion Profiles[^] used as a threshold cover between doorways or when dividing the floor into sections.
- Skirting boards and/or quad beading to conceal the expansion gap left around the perimeter of the laid flooring. Note: the moulding base must be a minimum of 12mm to be suitable for installation of Formica Flooring. A guide for Commercial expansion systems and cover strips is detailed on pages 10 - 12 (available from all major flooring retail outlets).
- Unika Lock Seal* is used for both joining cut-off sections of flooring around pipes/columns or where the 'stopper' is trimmed off the locking tongue to allow laying under door jambs and for sealing edges of planks in areas susceptible to accidental water spillage.
- Ensure you have the correct quantity of accessories to complete the installation. Refer Formica Flooring Room Calculator within this booklet.

[^]Refer Formica Flooring Expansion Joint & Trim guide, pages 10 – 12

Additional Accessories recommended for Installation and Care & Maintenance

- Lock Seal* adds water resistance to floor joints in areas susceptible to accidental water spillage
- Colour Sealant* fills expansion joints
- Deep Cleaner* is a specially developed deep cleaner for laminate flooring. Recommended for use every six months or following heavy soiling.
- Zip Clean* is a regular cleaning product for laminate flooring. Recommended for use weekly.
- Colourfill* repairs chips and scratches for laminate flooring

Tools Needed

- Pencil and set square to draw straight lines
- Razor-knife or scissors to cut the combination underlay
- Saw suitable for cutting melamine. Fine sharp tooth handsaw, dropsaw or jigsaw.
- Measuring tape and 2m straight edge ruler
- Electric drill and 6mm bit for fitting expansion profiles or door threshold trims.
- Long thin nails approx 30mm or liquid nail adhesive for cement walls to fix Quad beading or skirting boards.

*For more detailed information regarding accessories listed, refer page 13

Formica Flooring Calculator

FORMICA FLOORING ROOM CALCULATOR			
ROOM NAME	LENGTH	WIDTH	m ² (LxW)
Room 1			
Room 2			
Room 3			
Total of each column =	A	B	C
Add 5% extra for wastage to part C figure ∴ D = C + 5%			D
Divide part D by the number below that corresponds to the thickness of flooring selected, e.g. D÷1.9. This calculates the approximate quantity of packs required. 8mm = 1.9 12mm = 1.3			

FORMICA FLOORING ACCESSORIES CALCULATOR			
PRODUCT	E Room calculator	F Pack qty	G Amount needed
Combination Foil/Foam Underlay (laid on top of the sub-floor underneath Formica Flooring for moisture protection and sound insulation)		30m ² per roll (i.e. ÷ by 30)	
	Total part D		No. of rolls
Colour Sealant (used to fill expansion joints/gaps)		1 cartridge will cover 10-12 lineal metres* (i.e. ÷ by 10)	
	= (2 x A) + (2 x B)		No. of cartridges
Multi-Floor Trim (used as threshold between doorways. When dividing the floor into sections. Available in 900mm or 1800mm).		900mm for each doorway	
	No. of doorways		No. of trims
Quad Beading (used to conceal the expansion gap left around the perimeter of the laid floor & skirting board)		Quad beading comes in 2.4m lengths (i.e. ÷ by 2.4)	
	= (2 x A) + (2 x B)		No. of lengths
Formica Flooring Lock Seal Adhesive Sealant (used for joining cut-off pieces around pipes, columns and doorways. For joining planks in areas of high moisture or accidental spills).		500ml bottle = 50 lineal metres (5 packs)	
	Room Specific		No. of bottles
Note: We strongly recommend the use of Unika brand of accessories to be used in the installation of Formica Flooring. * When used in conjunction with PEP rod.			

Flooring Installation

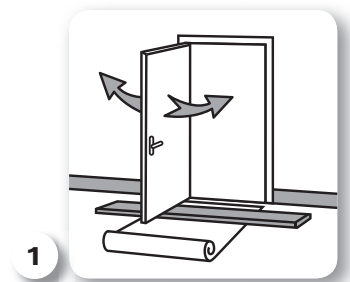
Note: Do not use a tapping block or pull bar in the installation of Formica Flooring. And under no circumstances use a hammer to connect the planks, as this will damage the locking system.

Step 1: Prepare the sub floor as per the Sub Floor Preparation Guide on page 3. It is recommended that all skirting boards and trims be removed prior to installing Formica Flooring, however in residential applications skirting boards can be left in place and the perimeter expansion gap concealed with a Quad beading trim (stained to suit).

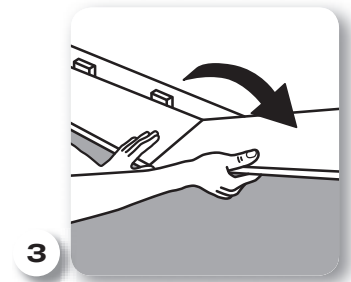
Step 2: (Refer Diagram 1) Check the bottom of the door fits over the laminate flooring through the door's entire arc of swing. If the door touches the plank, the bottom of the door will need to be trimmed.

Note: Undercut door jambs if applicable.

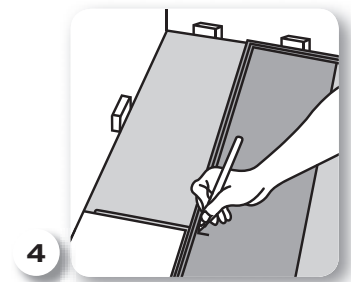
Step 3: (Refer Diagram 2) Start laying the planks from the left corner (working left to right). Place the plank with the groove on both the end and side facing the wall. Note: the protruding long lip on the side referred to as the tongue should be facing you and not the wall. Then insert installation spacers for the perimeter expansion gap (refer Pre-Installation Checklist to calculate the correct gap for the floor area).



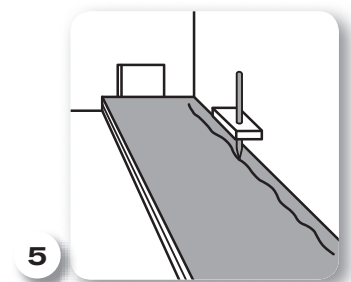
Step 4: (Refer Diagram 3) Connect the next plank in the row by placing the groove on the end into the end tongue of the adjoining plank. Repeat until you reach the end of the row. Continue to place installation spacers every 300mm interval and when starting the next row on the ends.



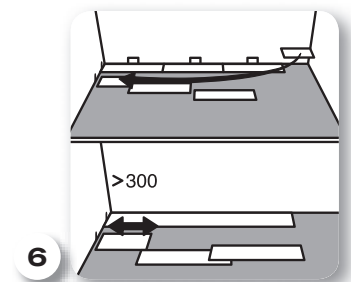
Step 5: (Refer Diagram 4) For the last piece in the row, place the tongue side of the plank to face the tongue of the adjoining plank (with the groove on the end to face the wall). Insert installation spacer to allow for expansion gap, and then mark where the plank is to be cut. Once cut, the plank with the groove on the end is connected into the end tongue of the adjoining plank (Refer Diagram 3). Note: When cutting planks face the decorative side down when using a jigsaw. When using a handsaw face the decorative side up. Always use a sharp fine tooth saw.



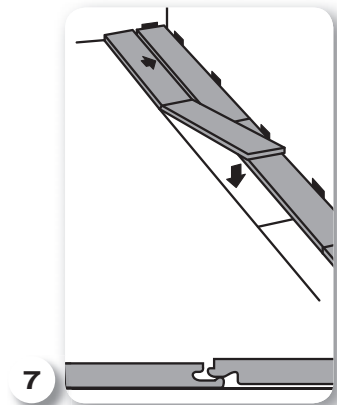
Step 6: (Refer Diagram 5) Before starting the next row, check the first row is straight with a string line or 2m straight edge ruler (aligned against the protruding tongue). More installation spacers may be needed to make the first row straight. Should the wall be too uneven, then the line of the wall must be marked onto the plank surface and the plank cut lengthwise to fit the profile of the wall.



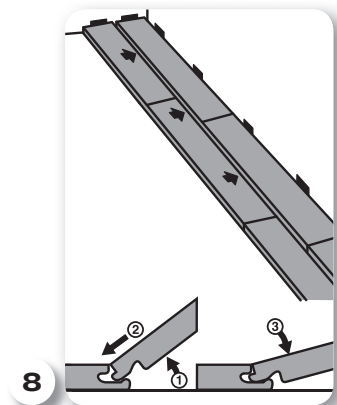
Step 7: (Refer Diagram 6) To start the next row, use the off cut from the previous row (ensure minimum length is 300mm) or use a new plank.



Step 8: Connect the planks of the second row on the ends and place them on top of the bottom lip of the protruding tongue (Refer Diagram 7). Then lift the planks gently and slot into the protruding tongue of the adjoining plank, working left to right (Refer Diagram 8). Note: You may need to use a masking tape to hold down the planks already laid so they do not move. Once the planks are connected in the row you can remove the tape.

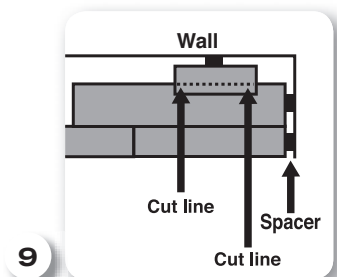


Step 9: (Refer Diagram 9) When laying the last row using the off cut from the previous row – turn the plank over with the groove side facing the wall and the decorative side facing down. Then mark a line indicating where to cut away (ensure installation spacers are placed against wall for expansion gap).



Once the plank has been cut, take the piece with the groove side (decorative side facing up) and place on top of the bottom lip of the protruding tongue and repeat Step 8.

Step 10: Fitting around the door jambs and between door frame. Allow for a 10mm expansion gap when laying planks around door jambs and fill the gap with Unika Colour Sealant* that is colour co-ordinated to the laminate floor (follow the instructions on the cartridge). Formica Flooring must be laid separately between door frames. Allow a 20mm gap between the door frame and cover the gap with an expansion profile^.



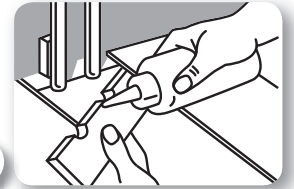
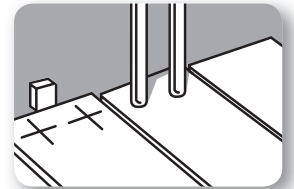
Note: If door jambs have been undercut, remove lip edge of previous row with chisel, apply Lock Seal to join and slide plank into position (refer installation DVD).

*For more detailed information regarding accessories listed, refer page 13
 ^Refer Formica Flooring Expansion Joint & Trim guide, page 10

When installing around pipes and columns, mark the centre of the pipe/column on the plank. Do this by placing the plank in front of, and then alongside the pipe/column. This should give an accurate centre point to drill holes (refer Diagram 10).

To allow an expansion gap drill holes 10mm larger than the pipes/columns on the marked area of the plank. Next, cut the plank crossway through the centre of the drilled holes. Fit the largest piece of the plank first, then apply Unika Lock Seal* to the smaller section of flooring (as per the instructions on the bottle). Fit the smaller section around the pipes/columns, being careful not to glue the sawn off piece to the sub floor, pipes/columns or wall.

Fill any gaps with Unika Colour Sealant* that's colour co-ordinated to the flooring.



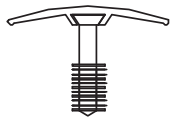
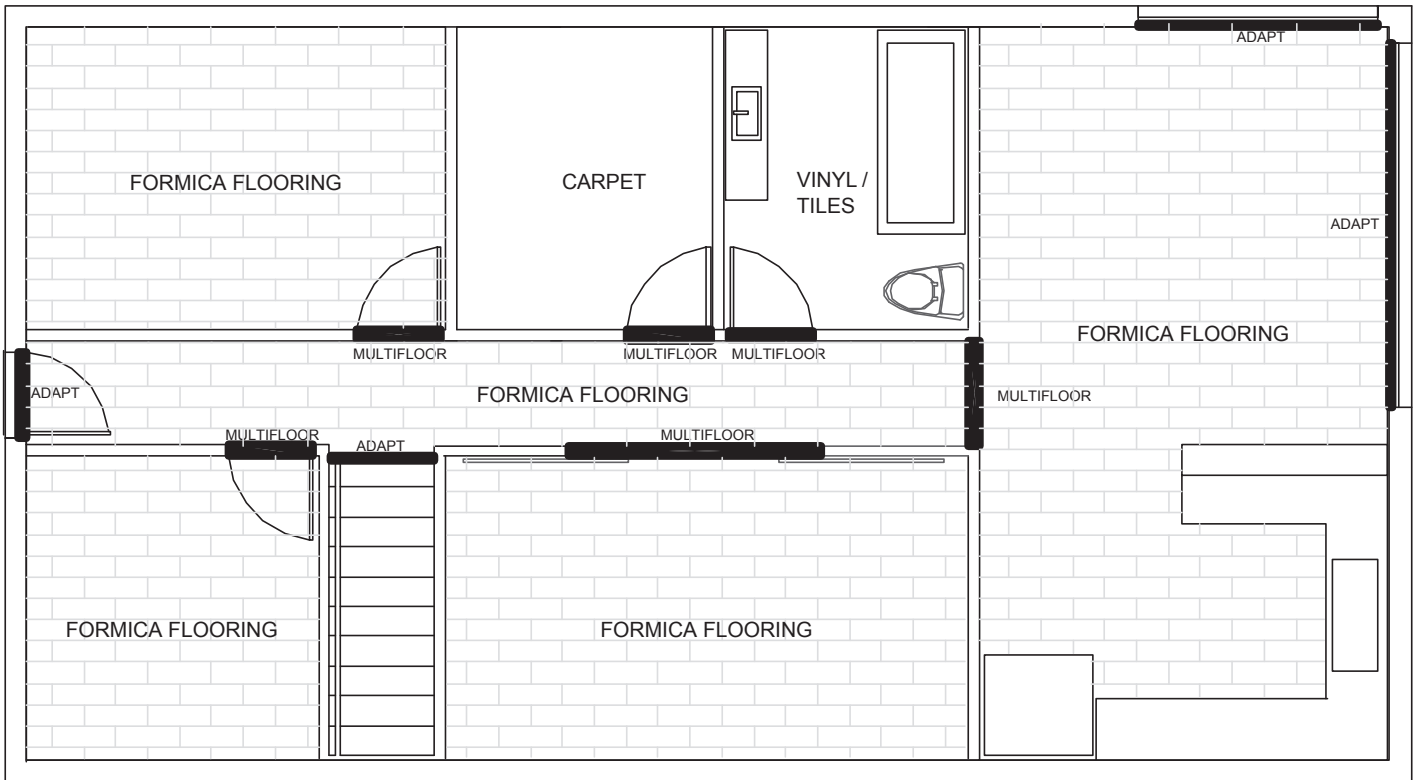
10

Step 11: Finishing off the laid flooring. When the floor laying is complete, remove all installation spacers and replace skirting boards or fix quad beading (laying it on top of the laminate flooring), to cover the perimeter expansion gap. Use long thin nails approximately 30mm to fix the quad beading or skirting boards or liquid nail adhesive for cement walls.

Note: Please refer to the Formica Flooring Installation DVD for fitting of panels where obstructions such as cabinets impede laying or where doorframes have been undercut.

Finally, inspect the floor. If there are small chips on the plank surface these need to be filled in using Unika Colour Fill* repair kit colour matched to the laminate floor. Follow the instructions on the pack.

Trim Guide



Profiles

Multifloor T1

T profile transition between level and lower floors.



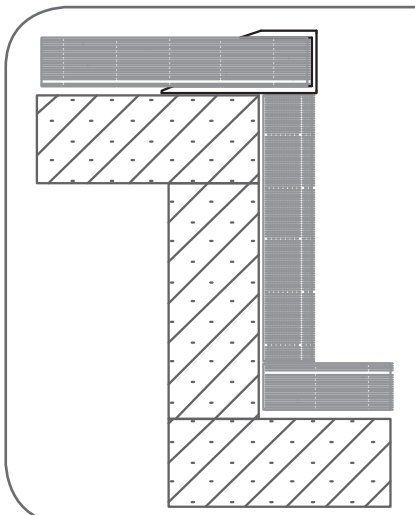
Adapt T5

End profile transition to walls and higher floors.



Tilers Mate - L angle

End and level profile transition.



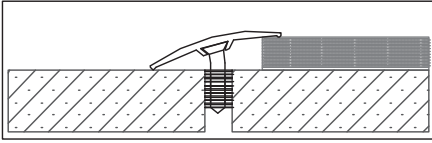
Transition Examples

Adapt T5

End profile transition for stairs.

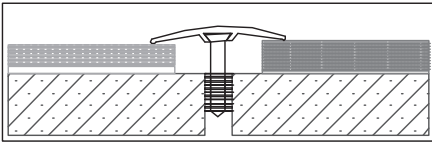
Formica Flooring must be glued to sub floor.

End Profile Transitions



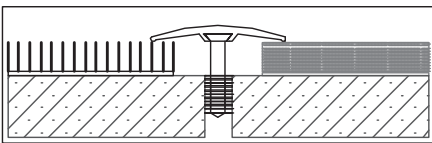
Multifloor T1

Transition from Formica Flooring to a lower hard floor surface, such as tiles, wood or vinyl.



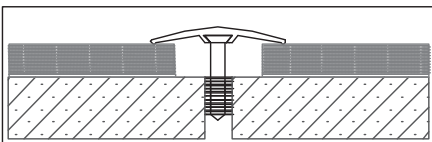
Multifloor T1

Transition from Formica Flooring to a raised floor surface, such as ceramic tiles.



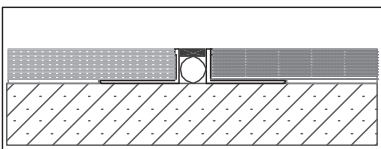
Multifloor T1

Transition from Formica Flooring to carpet.



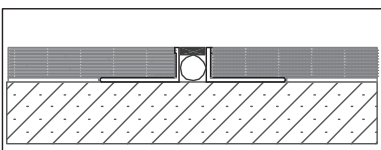
Multifloor T1

Transition from Formica Flooring to Formica Flooring use at doorways and expansion joints.



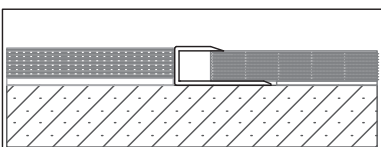
Tilers mate - L angle

Transition from Formica Flooring to a level hard floor surface, (+/-2mm) such as tiles, wood or vinyl. Keep minimum gap, fill gap with Unika Colour Sealant.



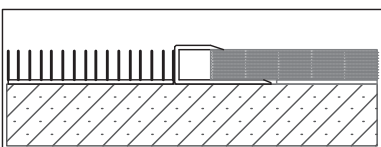
Tilers mate - L angle

Transition from Formica Flooring to Formica Flooring. Keep minimum 10mm gap, fill gap with sealant.



Adapt T5

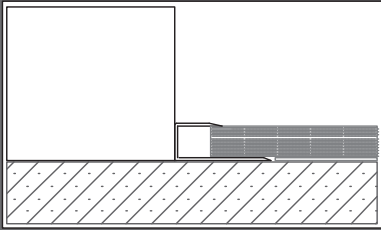
End profile transition from Formica Flooring to a level hard floor surface, (+/-2mm) such as tiles, wood or vinyl.



Adapt T5

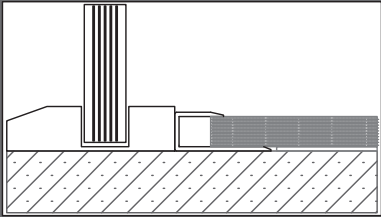
End profile transition from Formica Flooring to carpet.

End Profile Transitions



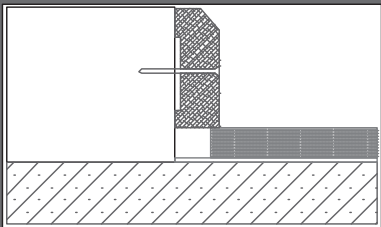
Adapt T5

End profile transition from Formica Flooring to other higher and vertical surfaces, such as walls, fireplace hearths.



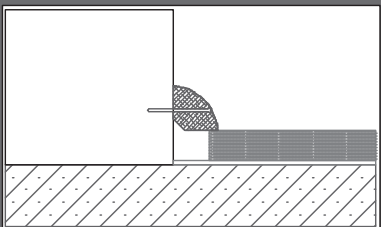
Adapt T5

End profile transition from Formica Flooring to other higher and vertical surfaces, such as walls, fireplace hearths.



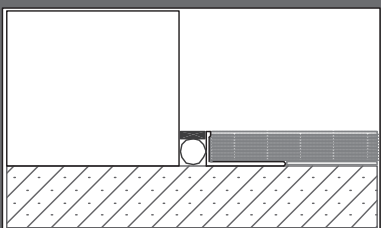
Skirting 12mm +

Use to cover expansion gaps around room perimeter.



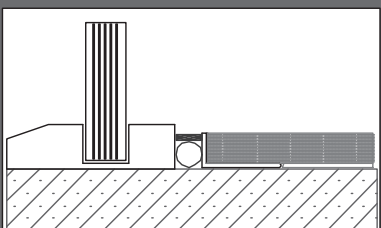
Quad Beading 12mm +

Use to cover expansion gaps around room perimeter.



Tilers mate L angle

Use for expansion gaps where skirting not applicable
Keep minimum 10mm gap, fill gap with sealant.



Tilers mate L angle

Use for expansion gaps at sliding doors, glazing beads
Keep minimum 10mm gap, fill gap with sealant.

Recommended Accessories

Combination Foil / Foam Underlay with a 2.5mm high-density polyethylene, low compression foam that is laminated to a heavy duty insulating foil.

Unika Colour Sealant is a flexible acrylic latex sealant used for laminate flooring expansion joints. Colour Sealant is colour matched to flooring and provides a water-resistant flexible seal around floor perimeter and cut out areas.

Unika Colour Fill Repairer is a hardwearing compound developed to repair chips and scratches that may accidentally occur when installing laminate or timber flooring. Colour Fill is colour matched to flooring for almost invisible repairs and may be used to fill open joints that may appear between planks.

Unika Lock Seal Adhesive and Sealant adds additional water resistance to floor joints in areas where accidental water spillage may occur. Its adhesive properties also allow added strength to the end lock of the plank or when the tongue is removed to allow fitting in confined areas.

Unika Deep Cleaner is a strong activating cleaner that will remove wax residue, floor polish, difficult stains, pen markings and scuffmarks without harming the flooring surface.

Unika Zip Clean is a high quality cleaning product developed for regular use to maintain laminate flooring.

Important Product Information

- Do not install Formica Flooring in bathrooms, laundries and toilets due to potential flooding.
- Take care when transporting the boxes to avoid possible damage. Damaged boxes may void the product warranty. Place unopened boxes inside the building where the floor is to be laid. Do not leave outside.
- Before commencing the installation open one box only and carefully read the laying instructions.
- Always use the correct accessories when laying Formica Flooring to ensure the product warranty does not become void.
- Formica Flooring is manufactured from approx 90% natural wood fibre, and like all wood based products, it will expand and contract with changes in room temperature and humidity. Therefore uneven joints and gaps between planks of 0.1mm and 0.2mm are within normal product tolerances.
- Formica Flooring meets Australian Standards for UV resistance, however flooring may fade according to the degree of exposure to UV sunlight and ageing of the floor. This is within normal product tolerances.
- For dark colour planks, white lines may appear between joints after flooring has been installed and may be removed with Unika Zip Clean or Deep Cleaner. This is within normal product tolerances and will fade away as floor is being used.

After Care

Cleaning the Floor

- **Under no circumstances wash the floor with wet cloths or mops. This only spreads dirt, and can cause swelling of the joints.**
- **Do not clean Formica Flooring with wax, polish, floor cleaner, detergent or scouring materials. Only use recommended Laminate Flooring cleaning products.**
- **Steam mops must not be used on Formica Flooring. It will cause irreversible damage and will void the product's warranty.**
- Always regularly clean Formica Flooring with a vacuum cleaner or micro-fibre mop, and Unika Zip Clean
- If the floor is very dirty or has stains, vacuum first to remove dust and loose dirt. Then use Unika Deep Cleaner* following the instructions on the bottle. (Available from major Flooring and Hardware Retail Outlets).
- Persistent stains can be removed with acetone applied onto a dry clean cloth and wiped over the stain.

Care and Maintenance

- Wipe up accidental spills immediately, with a clean dry cloth. Liquid spills left on Formica Flooring will cause swelling of the joints.
- Fit all movable furniture, like tables and chairs with felt pads.
- Place a doormat outside all external doors. Sand, dirt and grit act like abrasive paper and will damage the Formica Flooring surface layer.
- Place a plastic mat or rug under rolling chairs.
- Lay dirt-absorbing mats down in areas of high dirt incidence (such as entrance halls or hallways).
- Do not wax or varnish Formica Flooring. It has been designed and manufactured with a high strength coated surface layer, and applying wax or varnish will smear, yellow and craze the surface.
- Should accidental scratches occur on the surface layer of the plank, apply Unika Colour Fill* to repair (available from major Flooring and Hardware Retail Outlets).
- If more serious damage to planks occurs, please call The Laminex Group Customer Services on 0800 303 606.

*For more detailed information regarding accessories listed, refer page 4

Technical Information

LAMINATE FLOOR THICKNESS	12mm	8mm
Product Class	32	32
Commercial Warranty	7 years	7 years
Residential Warranty	20 years	15 years
Size per plank	1380 x 193 x 12mm	1380 x 193 x 8mm
Planks per pack	5	7
m ² per pack	1.331m ²	1.864m ²
Weight per pack (approx)	15kg	15kg
Substrate	Aquastop 6 HDF	Aquastop 6 HDF
Silent Underlay	Yes	-
Formaldehyde Emission	E1	E1
Swelling (EN 317)	<6%	<6%
Impact Resistance (EN 685)	IC2	IC2
Abrasion Resistance (EN 685)	AC4	AC4

Technical Standards

TEST	METHOD	RESULT		
8mm Formica Flooring				
Acoustic Testing	ISO140-8 and 140-6	Max 58 dB	Pass	
Slip Testing	AS/NZ 4586: 2004	Rating	R9	
		Pendulum	Y	
Fire Rating	AS ISO 9239.1: 2003	Critical Radiant Flux	Pass	Greater than 4.5kW/m ²
		Average Smoke Obscuration	Pass	Less than 750%
12mm Formica Flooring				
Acoustic Testing	ISO140-8 and 140-6	Max 62 dB	Pass	
Slip Testing	AS/NZ 4586: 2004	Rating	R9	
		Pendulum	Z	
Fire Rating	AS ISO 9239.1: 2003	Critical Radiant Flux	Pass	Greater than 4.5kW/m ²
		Average Smoke Obscuration	Pass	Less than 750%

Limited Warranty information

To validate the product warranty, please keep the label along with the original purchase receipts including installation receipts if applicable. Failure to have all documents will void the product warranty.

Exclusions applicable to both residential and commercial warranty: **1.** Movement in the flooring resulting from incorrect installation methods. **2.** Expansion caused as a direct result of the following: a) Moisture rising from the sub floor, absorbed into the product. b) Moisture absorbed into the product as a direct result of water/liquid spillage or excess water used to clean the product. **3.** Damage caused as a direct result of the following a) Vehicular traffic b) Abnormal use c) Abusive use d) Poor maintenance e) Exposing the floor to excessive sand, grit or gravel. **4.** Where the product has been used in high humidity areas (wet areas excluding domestic kitchens). **5.** Outdoor applications. **6.** Defective planks used in the installation.

Upon making a warranty claim you will need to provide proof of purchase along with an original Formica Flooring product label. Upon approval of a claim, The Laminex Group will supply replacement product in the closest decors available in the range at the time of the claim.

Formica Residential Limited Warranty

Floor Thickness Limited Warranty Period

8mm	15 years
12mm	20 years

Terms and Conditions: **1.** The Laminex Group as the distributor of Formica Flooring guarantees to the first purchaser that the product is free from manufacturing defects notified in writing to The Laminex Group within the nominated time period from the date of original supply. **2.** The Laminex Group's liability to the first purchaser for defects is limited to those defects caused directly by the manufacturing process for Formica Flooring. **3.** This warranty given by The Laminex Group is in addition to, and in no way limits, any warranty enjoyed by the first purchaser pursuant to the New Zealand Fair trading Act and the New Zealand Consumer Guarantees Act. **4.** This warranty guarantees the product against splitting, delaminating, twisting, structural deformation and wearing through of the wear and stain resistant coating in a residential environment for the nominated period. It is conditional upon the product being used in normal wear residential situations only and installed, maintained and protected from damage strictly in accordance with the manufacturer's guidelines as supplied with the product. **5.** This warranty is restricted to the replacement of the defective product only and does not extend to cover claims for any consequential loss, damage or expense incurred howsoever (including, but not restricted to labour and other costs in replacing the product, inconvenience and physical injury). In the event of a colour no longer being available in the range, a selection from the current range will be offered in its place.

Formica Flooring Commercial Limited Warranty

Floor Thickness Limited Warranty Period

8mm	7 years
12mm	7 years

Terms and Conditions: **1.** The Laminex Group as the distributor of Formica Flooring guarantees to the first purchaser that the product is free from manufacturing defects notified in writing to The Laminex Group within the nominated time from the date of original supply. **2.** The Laminex Group's liability to the first purchaser for defects is limited to those defects caused directly by the manufacturing process for Formica Flooring. **3.** This warranty given by The Laminex Group is in addition to, and in no way limits, any warranty enjoyed by the first purchaser pursuant to the New Zealand Fair trading Act and the New Zealand Consumer Guarantees Act. **4.** This warranty guarantees the product against splitting, delaminating, twisting, structural deformation and wearing through of the wear and stain resistant coating in a general commercial environment for the nominated period. It is conditional upon the product being used in normal wear general commercial situations only and installed, maintained and protected from damage strictly in accordance with the manufacturer's guidelines as outlined in this document. **5.** This warranty is restricted to the replacement of the defective product only and does not extend to cover claims for any consequential loss, damage or expense incurred howsoever (including, but not restricted to, labour and other costs in replacing the product, inconvenience and physical injury). In the event of a colour no longer being available in the range, a selection from the current range will be offered in its place.

Product marketed and distributed by The Laminex Group Limited. A division of **FLETCHER BUILDING PRODUCTS LTD.** Made in Austria to The Laminex Group specifications.



Laminate **Flooring**

Formica Flooring is marketed and distributed by The Laminex Group.
A division of **FLETCHER BUILDING PRODUCTS LTD.**

Made in Europe to The Laminex Group specifications.

For enquiries please call The Laminex Group Customer Services on **0800 303 606** or visit
www.thelaminexgroup.co.nz